

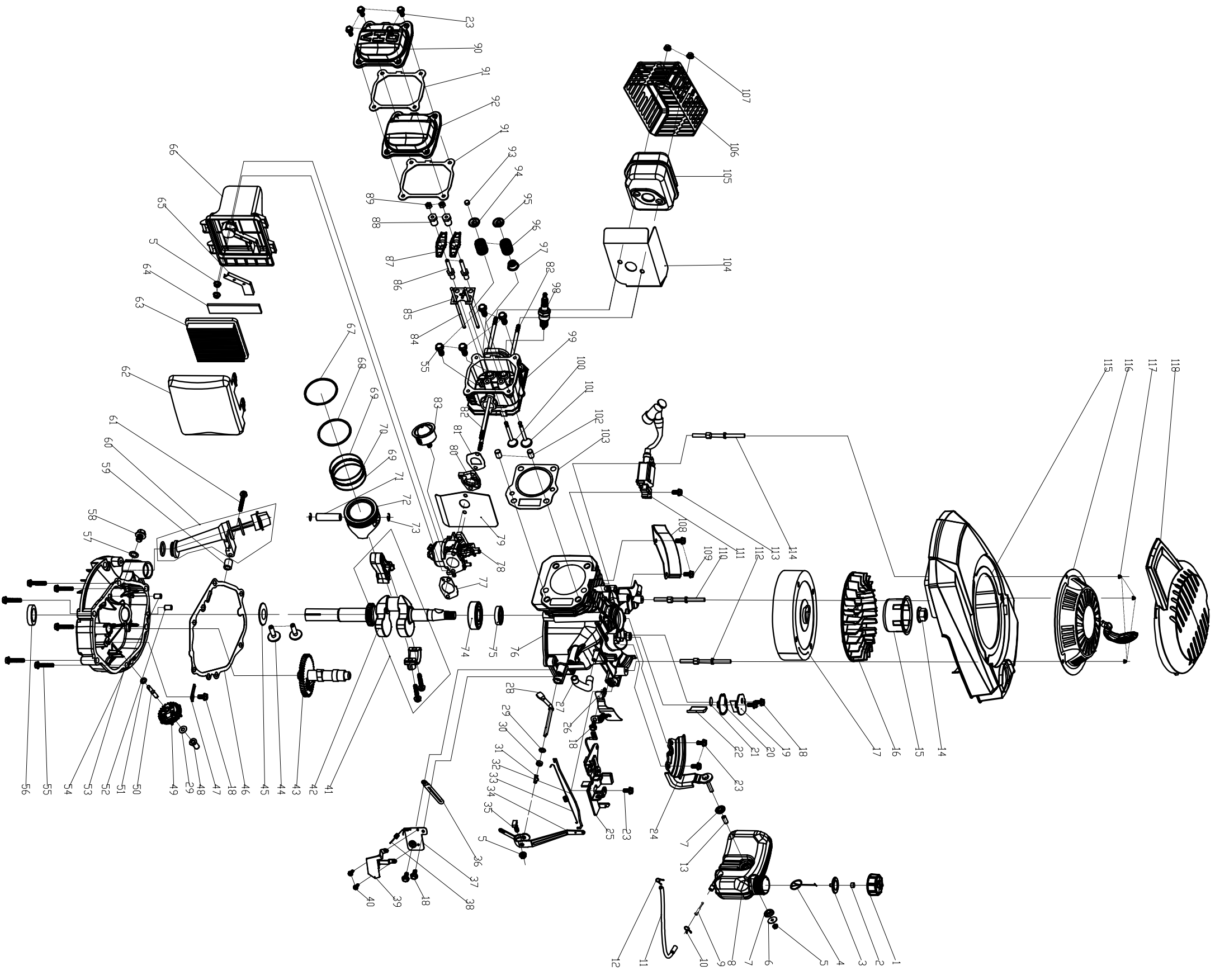
				定速刹车+快速扳手+H轮+无极调速豪华扶手+前脸			宁波市德霖机械有限公司	
							S511VHYB-T8	
标记	处数	更改文件号	签字	日期	图样标记	重量	比例	
设计			标准化				1:15	
审核								
工艺			日期		共 页	第 页		

M 5140V-851810-S511VHYB-T8-Part list-201811

Model: S511VHY			
	Material No.	English Description	Qty
1	60100030000	Inch hex flange bolts	1
2	70040070000	blade washer	1
3	70130360000	blade	1
4	70140480000	Blade Adapter	1
5	70480010000	Long Key for Crankshaft	1
6	70580150000	Small Belt Wheel	1
7	70040080000	blade washer	1
8	60040150000	Half round head square neck bolts	1
9	60040090000	Half round head square neck bolts	3
10	20660110000	belt cover	1
11	60170300000	Phillips flat head self tapping screw	7
12	20200250000	front mask	1
13	20200240000	front mask	1
14	60170290000	Phillips flat head self tapping screw	15
15	60060520000	Bolt	2
16	60150080000	Self-locking nut	2
17	70740920130	deck welding assy.	1
18	60410080000	Pull Spring for Pull Rod	1
19	70180180640	Height Adjustment Pull Rod	1
20	60300030000	R type pin	4
21	60150090000	Self-locking nut	10
22	60060170000	Hex flange bolts	6
23	70070120000	right bracket	1
24	T851990	petrol engine	1
25	20460030000	inlet	1
26	20460010000	inlet	1
27	60370020000	"O" ring	1
28	20590020000	cable stopper	1
29	60150060000	Self-locking nut	6
30	60060290000	Hexagon head bolts	2
31	20750090000	rear discharge cover dust proof board	1
32	20160090000	mulching plug	1
33	70250060000	Board for Height Adjuster	1
34	70070060000	right bracket	1
35	70030070000	Mulch Shaft	1
36	60390010000	mulch board spring	1
37	20120010000	mulching board	1
38	20110080000	side discharge cover	1
39	70060060130	Bracket plate for defelctor	1
40	60170580000	self tapping screw	2
41	20650200000	Fixed block holder	1
42	60380600000	Limit block spring	1
43	20490090000	The side row overlays the limit block	1
44	60200580000	The side row covers the fixed seat gaske	1
45	20620200640	outer cover of hub	2
46	20880300000	wheel assy.	2
47	20610120000	inner cover of hub	2
48	60180110000	Resilient washer	2
49	70840410000	front drive assy.	1
50	60320090000	v belt	1
51	70860450000	selfpropelled assy.	1
52	60290080000	bratchet pin	2
53	20430030060	rear wheel axle sleeve	2
54	21070030000	selfpropelled ratchet washer	4
55	60240060000	spring washer	4
56	70290210000	self propelled plate	1
57	70300170000	Ratchet Wheel L	1
58	60170400000	self tapping screw	4
59	20140170000	front bracket fastener	2
60	70290200000	Displacement pressure plate after	2

61	70300180000	Ratchet Wheel L	1
62	20620230640	outer cover of hub	2
63	20880330000	wheel assy.	2
64	20610060000	inner cover of hub	2
65	70850570000	rear drive assy.	1
66	20270010000	height adjustment ball	1
67	20050080136	fabric grass bag	1
68	70010090000	fabric metal frame	1
69	60220010000	lock washer	2
70	70030050000	Shaft for rear discharge cover	1
71	60380240000	cover spring	1
72	20380090000	rear discharge cover	1
73	70040100000	blade washer	4
74	20080090000	top of grass box	1
75	21010010640	filter net of grass bag	1
76	20340130130	foam pipe	1
77	70550080130	Self-propelled Lever	1
78	20340120640	foam pipe	1
79	70540120130	stop lever	1
80	20490060000	Wrench fixed block	4
81	60170570000	Cross recessed Pan head self-tapping screws(wi	4
82	60150030000	Hex lock nut	4
83	20490030000	Wrench fixed block	1
84	20490020000	Wrench fixed block	1
85	20490050000	Flameout wrench fixed block	1
86	20490040000	Flameout wrench fixed block	1
87	20340110130	foam pipe	1
88	20300050000	Right control box cover	1
89	20300060000	Right control box cover	1
90	60170440000	Cross recessed countersunk head tapping screw	6
91	20300090000	Adjust ment cover plate	1
92	70230090000	Rope Guide	1
93	60130020000	Cap nut	1
94	70510030130	middle handrail	2
95	60170800000	Cross recessed countersunk head screws	4
96	60040150000	Half round head square neck bolts	1
97	70500360130	upper handrail	1
98	60150020000	Hex lock nut	3
99	60060870000	Hexagon head bolts	1
100	71190010000	Stepless speed regulation handle	1
101	70050100000	Cable fixed block	1
102	70150220000	bushing	1
103	60200360000	SPRING WASHER	1
104	60200020000	Gasket	1
105	70050110000	Cable fixed block	1
106	20310030640	throttle box handle	1
107	70830070000	throttle cale	1
108	70780170000	selfpropelled cable	1
109	70810100000	brake cable	1
110	20300070000	Left control box cover	1
111	20300080000	Left control box cover	1
112	20040140640	triangle knob	2
113	70050180000	lock for fast fix handle	2
114	70220020000	Quick Fix Handle	2
115	20580020640	quick fix knob	2
116	60250080000	Pin	2
117	70520210130	lower handrail	1
118	60040090000	Half round head square neck bolts	3
119	60200470000	flat Gasket	5
120	20040050640	triangle knob	2
121	60140080000	Hexagon nut	4
122	20240020000	fastener	2

18加浓II汽油机定速带刹车新面罩爆炸图



18		定速刹车机		宁波市德莱机械有限公司	
标记	数量	分区	更改名称	姓名	年月日
设计			标准化		
校对			审定		
审核			批准		
工艺					
比例			1:1.5		
张数			1		
张号			S		
共 1 页			第 1 页		
版本			A0		

	Material Code	English	Qty
1	25170110000	fuel tank cap	1
2	80010070000	fuel tank cap sponge	1
3	60440340000	Fuel Tank Cap seal gasket	1
4	25250010000	connect cable of fuel cap	1
5	60140020000	Hex flange nuts	4
6	60190310000	The oil tank mount big washer	1
7	25310030000	Tank damping rubber pad	2
8	25180230000	fuel tank body	1
9	25150010000	Fuel oil screen pipe	1
10	60230020000	fuel pipe lock clamp I	1
11	25160020000	fuel pipe	1
12	60230010000	fuel pipe lock clamp II	1
13	60240250000	Fuel tank mounting bushing	1
14	60140050000	Hex flange nuts	1
15	75210020000	starter hub	1
16	25040120000	fan	1
17	75390030000	flywheel assy	1
18	60060520000	Bolt	6
19	75110010000	Respirator Cover Plate	1
20	75720160000	Respirator head gasket	1
21	75100030000	Respirator valve plate	1
22	75150010000	oil filter net	1
23	60060530000	Bolt	7
24	75330060000	main bracket of fuel tank	1
25	75380080000	detent assy.	1
26	75030070000	wind shield	1
27	25030020000	waste pipe	1
28	75290010000	rate-limiting rocker arm shaft	1
29	60200490000	Gasket	2
30	60360080000	oil seal	1
31	60300040000	R type pin	1
32	75160030000	Handspike of Valve	1
33	60410050000	valve spring	1
34	75070030000	throttle rocker arm	1
35	60060730000	bolt	1
36	60450010000	clip	1
37	75360010000	single phrase throttle assy.	1
38	60410500000	throttle control spring	1
39	71160010000	Single speed control panel	1
40	60060510000	Bolt	2
41	75460030000	connecting rod assy.	1
42	75510630000	crankshaft assy.	1
43	75470030000	camshaft assy.	1
44	75250020000	pin	2
45	60200180000	clockwise gear gasket	1
46	75720250000	Respirator head gasket	1
47	75280010000	rate-limiting gear shaft	1
48	25070010000	Sliding Sleeve	1
49	75520020000	rete-limiting gear assy.	1
50	75270030000	rate-limiting gear shaft	1

	Material Code	English	Qty
51	60200060000	Gasket	1
52	60280030000	spacing pin	1
53	75240150000	Crank box cover	1
54	60280050000	spacing pin	1
55	60050050000	locking bolt	10
56	60360100000	oil seal	1
57	60200150000	Oil drain bolt gasket	1
58	60061020000	Oil drain bolt	1
59	25080020000	Distance Sleeve of Lubricating Setting	1
60	25200050130	Lubricating Gauge Assy	1
61	60060630000	Bolt	1
62	25120010000	Air Filter Upper Cover	1
63	25300020000	Paper filter	1
64	25300010000	Coarse sponge filter	1
65	25020010000	Exhaust Gas Cover Board	1
66	25220010000	air filter base assy.(II)	1
67	75130110000	Piston Ring II	1
68	75130120000	Piston Ring II	1
69	75090050000	Guide Rail	2
70	75000060000	Bushing Ring	1
71	60310050000	piston pin	1
72	75120070000	Piston	1
73	60240110000	washer	2
74	60010140000	rolling bearing	1
75	60360120000	oil seal	1
76	75500150000	crankshaft box assy.	1
77	75730100000	Air filter paper pad	1
78	75410590000	Carburetor	1
79	75730060000	Intake pipe paper pad II	1
80	25090020000	Air Inlet Pipe	1
81	75730050000	Intake pipe paper pad I	1
82	60080030000	Dual-head bolts	4
83	25210020130	prime button II	1
84	75350040000	push rod	2
85	75260020000	push rod director plate	1
86	60060760000	valve rocker arm support bolts	2
87	75230010000	Rocker of Valve	2
88	60160050000	Valve adjustment nut	2
89	60160030000	And nuts	2
90	75080030000	cylinder head cover II	1
91	75720270000	Respirator head gasket	2
92	75080020000	cylinder head cover I	1
93	75200010000	Top Cover of Exhaust Valve	1
94	75180020000	Spring Coil of Exhaust Valve	1
95	75180010000	Spring Coil of Intake Valve	1
96	60380090000	valve spring	2
97	60360130000	oil seal assy	1
98	75140010000	spark plug	1
99	75490070000	cylinder head assy.	1
100	75190020000	Exhaust Valve	1

	Material Code	English	Qty
101	75170020000	IntakeValve	1
102	60280020000	spacing pin	2
103	75720110000	Cylinder head gasket	1
104	75740020000	Muffler insulating pad	1
105	75540150000	muffler assy.	1
106	75530030000	muffler cover assy.	1
107	60150100000	Self-locking nut	2
108	75030020000	wind shield	1
109	60060540000	Bolt	2
110	60080290000	Different-shaped double-head bolts II	1
111	75370020000	ignition assy.	1
112	60080210000	Dual-head bolts	1